

USB 3.0 SATA 2.5" & 3.5" HARD DRIVE DOCKING STATION



With a Sabrent **EC-UBLB** SATA Docking Station you can Hot-Swap 2.5"/3.5" SATA Hard Drives when connected to your Desktop or Notebook. Tool free Plug & Play installation makes for an easy setup.

REVIEW/LED INDICATOR

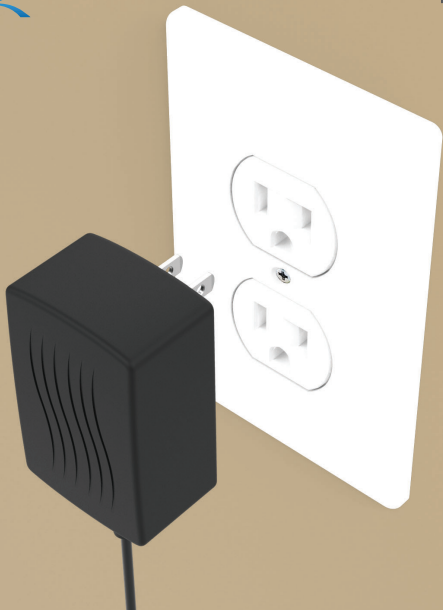


- 1 POWER LED
- 2 DATA TRANSFER INDICATOR
- 3 HARD DRIVE BAY

- 4 USB 3.0 PORT
- 5 DC-IN JACK
- 6 POWER SWITCH



Connect the power adapter to the back of the dock



Connect the power adapter to a power outlet



Connect the USB cable to the back of the dock



Connect the other end of the USB cable to your computer USB port



Insert your hard drive into the Hard Drive Bay



Press the Power Switch to ON



NOTE: PLEASE DO NOT REMOVE YOUR HARD DRIVE WHILE IN USE

The Power LED will come on solid Blue and
the Data Transfer LED will flash White while in use



When not in use, press the power button to OFF

WINDOWS PC HARD DRIVE WITH DATA/FILES

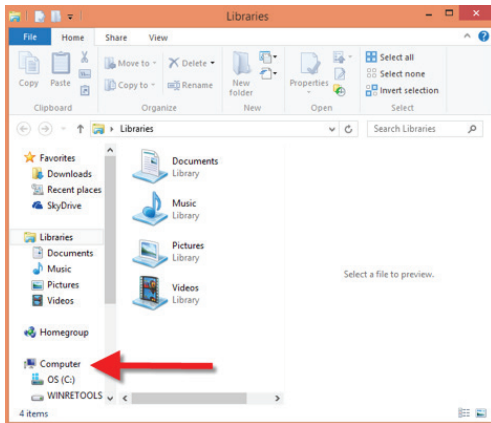
Click on the **Start Icon** located on the bottom left of the screen and then click on **Computer**



Note:
You can also click on the **File Explorer Icon** and then click on **This PC** or **Computer**



You should get a new drive letter every time you insert a hard drive with data/files



Name	Type	Total Size
OS (C:)	Local Disk	
WINRETOOLS (D:)	Local Disk	
DVD RW Drive (E:)	CD Drive	
New Volume (F:)	Local Disk	
Local Disk (G:)	Local Disk	

WINDOWS PC NEW HARD DRIVE SETUP (HARD DRIVE WITH NO DATA/FILES)

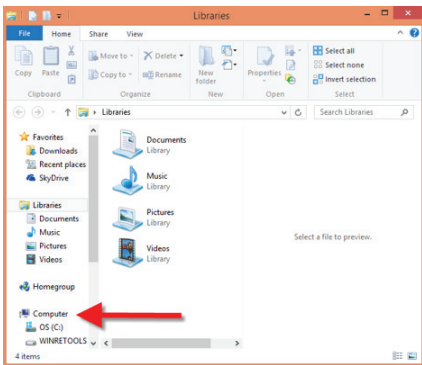
Click on the **Start Icon** located on the bottom left of the screen and then **RIGHT** click on **Computer**



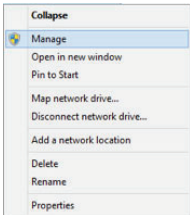
Note:

You can also click on the File Explorer Icon and then click on This PC or Computer

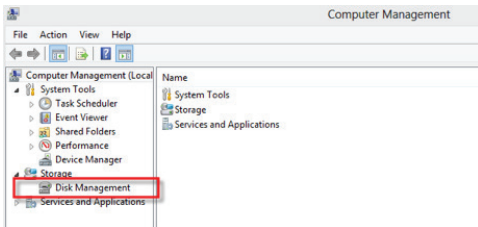




Click on **Manage**



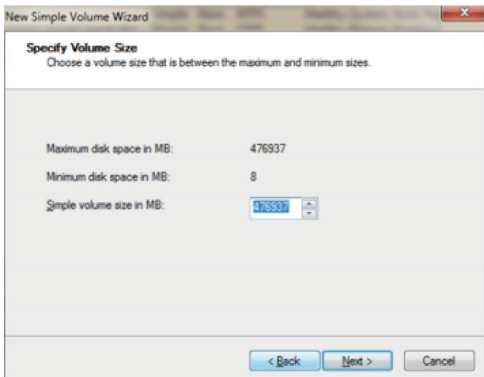
Click on **Disk Management**



Note: Disk 0 should be your internal hard drive
Disk 1 should be your external hard drive but **SETUPS MAY DIFFER**
RIGHT click on **Unallocated** and click on **New Simple Volume**

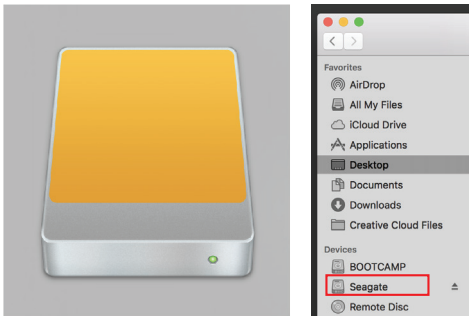
Disk 0 Basic 465.76 GB Online	(C:) 195.32 GB NTFS Healthy (System, Boot, Page File)
Disk 1 Basic 465.76 GB Online	465.76 GB Unallocated
CD-ROM 0 DVD (F:) No Media	

Go through the **Setup Wizard** to assign a drive letter



MAC OS HARD DRIVE WITH DATA/FILES

A new Icon should pop up on your main screen each time you insert a hard drive with DATA/Files

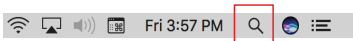


Click on the Icon to view your hard drive

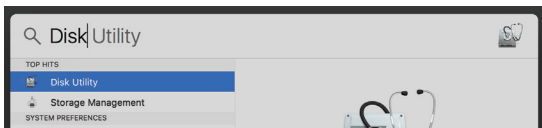
Note: You can also click on the Finder icon and select your hard drive under Devices

MAC OS NEW HARD DRIVE SETUP (HARD DRIVE WITH NO DATA/FILES)

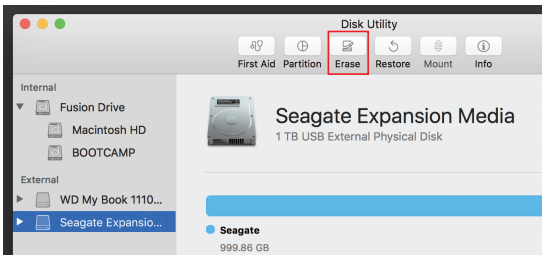
Click on the **Search Icon** on your toolbar



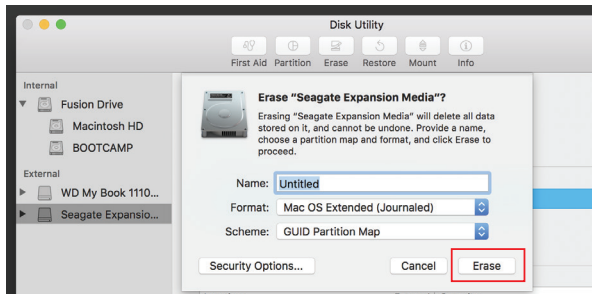
Type in **Disk Utility** and click on it



Click the icon for your external hard drive located in the sidebar on the left
Click on the **Erase** tab at the top of the window



Select the volume format you want and give it a name



Click on **Erase**

NOTES

- This is backwards compatible on USB 2.0 and 1.1 with their transfer speeds.
 - Please do not remove your hard drive while hard drive is being accessed.
 - The dock will automatically go into sleep mode if the connection is left idle for more than 30 minutes.
 - Accessing the hard drive will automatically cancel sleep mode and power back up the hard drive.
-

TROUBLESHOOTING/SUPPORT

Power LED does not come on?

- Make sure that you have a tight connection between the power adapter and dock.
- Try it on a different power outlet.

HDD LED does not come on?

- Re-seat the hard drive into the bay.
- Swap the hard drive out with a spare.

Computer does not recognize the hard drive?

- Make sure that you have a tight connection between the dock and 3.0 cable.
- Try the USB cable on a different USB port on your computer.
- New hard drives must be setup, please review new hard drive setup for your OS.
- Swap the hard drive out with a spare.

Please contact our Technical Support team if issues continue